

DATASHEET

Napsin A Rabbit Monoclonal Antibody(ARB840)

CAT. NO. ARB6630

KEY FEATURES

Target	Napsin A	Clonality	Monoclonal
Clone ID	ARB840	Applications	IHC
Source / Host	Rabbit	Dilution	1:100-1:200
Reactivity	Human	Storage	at-20°C

BACKGROUND

Napsin A is a pepsin-like aspartic proteinase contains 420 amino acids. It is predominantly expressed in the lung and kidney. In the lung, Napsin A is expressed in alveolar type II pneumocytes, regulated by TTF-1, and is involved in the generation of the surfactant protein B. Intra-alveolar macrophages contain Napsin A as a result of phagocytosis. In the kidney, Napsin A is expressed in the proximal tubules, where it is involved in lysosomal protein catabolism. Napsin A is important in the differential diagnosis of lung adenocarcinoma vs. squamous cell carcinoma, used in a panel with TTF-1, CK5 and p63. For tumours presenting as adenocarcinoma of unknown origin, the identification of a lung origin may be aided by NapA together with TTF1, and renal origin by NapA together with PAX8.

APPLICATION

To ensure optimal assay performance, AREX recommends conducting reagent titration tailored to each testing system for optimal detection results.

IHC	1:100 - 1:200
-----	---------------

*Results are sample-specific. Please refer to your local assay conditions and test parameters for reference.

PRODUCT OVERVIEW

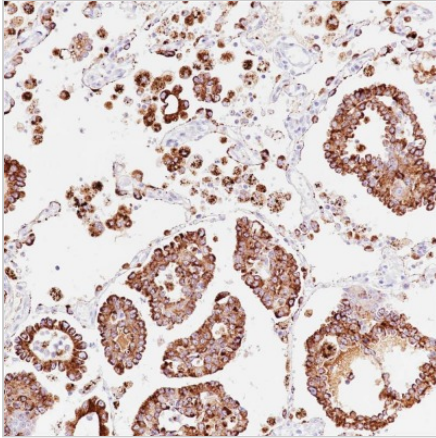
Predicted Molecular Wt	45 kDa
Purity	ProA affinity purified IgG
Subcellular location	Cytoplasm
Swissprot ID	O96009
Immunogen	Synthetic peptide corresponding to residues within aa50-150 of Napsin A
Storage Buffer	PBS 59%, Sodium azide 0.01%, Glycerol 40%, BSA 0.05%
Recommended method	Heat induced epitope retrieval with Tris-EDTA buffer (pH 9.0), primary antibody incubate at RT (18° C-25° C) for 30 minutes.

*AREX continuously optimizes our products. Webpage content may not reflect the latest updates. For inquiries, please contact info@arexbio.com or your local distributor.

*Clone Number, Reactivity, Source/Host and Clonality can be found in the product name and Key Features section above.

DATASHEET**Napsin A Rabbit Monoclonal Antibody(ARB840)**

CAT. NO. ARB6630

DATA

Immunohistochemical staining of human lung adenocarcinoma tissue sections negative for Napsin A using Napsin A Rabbit Monoclonal Antibody (ARB840).

Immunohistochemical staining of human lung adenocarcinoma tissue sections negative for Napsin A using Napsin A Rabbit Monoclonal Antibody (ARB840).

STORAGE

Store at 4°C short term. For long term storage, store at -20°C, avoiding freeze/thaw cycles.

NOTE

For Research Use Only. Not for diagnostic, therapeutics, prophylactic or in vivo use.

More information: www.arexbio.com