

## DATASHEET

# TTF1 Rabbit Monoclonal Antibody(ARB839)

CAT. NO. ARB6629

### KEY FEATURES

|               |        |              |             |
|---------------|--------|--------------|-------------|
| Target        | TTF1   | Clonality    | Monoclonal  |
| Clone ID      | ARB839 | Applications | IHC         |
| Source / Host | Rabbit | Dilution     | 1:100-1:200 |
| Reactivity    | Human  | Storage      | at-20°C     |

### BACKGROUND

Thyroid transcription factor-1 (synonymes: Homeobox protein Nkx-2.1) is a 371 amino acid protein, 39 kDa, which belongs to the NKX homeobox transcription factor family. TTF-1 stimulate or repress transcription of particular genes by binding to their regulatory sequences. TTF-1 plays a role in regulating genes in the thyroid, lung and brain. Its molecular targets in the thyroid gland are thyroglobulin, thyroperoxidase and thyrotropin receptor. TTF-1 activates transcription of the genes encoding these proteins. In lung, TTF-1 promotes the transcription of the surfactant proteins A to D, and the Clara cell secretory protein. In brain, the molecular targets of TTF-1 are unknown. Besides being a tissue-specific transcription promoter in adult organs, TTF-1 has been suggested a role in morphogenesis and cytodifferentiation. Among thyroid neoplasms, TTF1 is seen in virtually all tumours of follicular derivation. In diagnostic pathology, TTF-1 is useful as marker for pulmonary adenocarcinoma and pulmonary neuroendocrine malignancy, including small cell lung carcinoma. It can be used to differentiate primary lung adenocarcinoma from metastasis of extrapulmonary origin.

### APPLICATION

To ensure optimal assay performance, AREX recommends conducting reagent titration tailored to each testing system for optimal detection results.

|     |               |
|-----|---------------|
| IHC | 1:100 - 1:200 |
|-----|---------------|

\*Results are sample-specific. Please refer to your local assay conditions and test parameters for reference.

### PRODUCT OVERVIEW

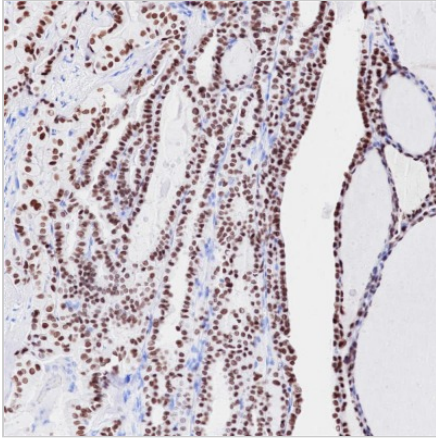
|                        |  |
|------------------------|--|
| Predicted Molecular Wt | 39 kDa   |
| Purity                 | ProA affinity purified IgG   |
| Subcellular location   | Nucleus  |
| Swissprot ID           | P43699   |
| Immunogen              | Synthetic peptide corresponding to residues within aa50-150 of TTF-1   |
| Storage Buffer         | PBS 59%, Sodium azide 0.01%, Glycerol 40%, BSA 0.05%   |
| Recommended method     | Heat induced epitope retrieval with Tris-EDTA buffer (pH 9.0), primary antibody incubate at RT (18° C-25° C) for 30 minutes. |

\*AREX continuously optimizes our products. Webpage content may not reflect the latest updates. For inquiries, please contact [info@arexbio.com](mailto:info@arexbio.com) or your local distributor.

\*Clone Number, Reactivity, Source/Host and Clonality can be found in the product name and Key Features section above.

**DATASHEET****TTF1 Rabbit Monoclonal Antibody(ARB839)**

CAT. NO. ARB6629

**DATA**

Immunohistochemical staining of human thyroid carcinoma tissue sections negative for TTF1 using TTF1 Rabbit Monoclonal Antibody (ARB839). Immunohistochemical staining of human thyroid tissue sections negative for TTF1 using TTF1 Rabbit Monoclonal Antibody (ARB839).

**STORAGE**

Store at 4°C short term. For long term storage, store at -20°C, avoiding freeze/thaw cycles.

**NOTE**

For Research Use Only. Not for diagnostic, therapeutics, prophylactic or in vivo use.

More information: [www.arexbio.com](http://www.arexbio.com)