

DATASHEET

CD10 Rabbit Monoclonal Antibody(ARB836)

CAT. NO. ARB6626

KEY FEATURES

Target	CD10	Clonality	Monoclonal
Clone ID	ARB836	Applications	IHC
Source / Host	Rabbit	Dilution	1:100-1:200
Reactivity	Human	Storage	at-20°C

BACKGROUND

CD10 is a single-chain cell surface glycoprotein, also is designated as common acute lymphoblastic leukaemia antigen (CALLA), neprilysin and neutral endopeptidase. Besides, CD10 is a zink-dependent peptidase (metalloprotease), degrading various bioactive peptides, and it plays a functional role by modulating cellular responses to peptide substrates. CD10 is present on the cell surface of bone marrow stem cells and myelopoietic cells (including neutrophils), follicular centre cells, few mature B-lymphocytes, and a subpopulation of parafollicular T-lymphocytes. CD10 is also found in enterocytes in the upper part of the intestinal tract (brush border), in liver (bile canaliculi), kidney (glomerular and proximal tubular cells), pulmonary alveolar cells, myoepithelial cells of breast and sweat and salivary glands, prostate glandular cells, placental trophoblastic cells, endometrial stromal cells, some endothelial cells, and a minority of (myo-)fibroblasts (including skin periadnexal cells). CD10 is expressed in a high percentage of cases of acute lymphoblastic leukemia, follicular lymphoma, Burkitt's lymphoma, some hematopoietic tumors, and chronic myelogenous leukemias in lymphoid blast crisis. CD10 is particularly useful in the classification of B-cell leukaemias/lymphomas and classification of carcinomas (identification of hepatocellular carcinoma and renal cell carcinoma). CD10 may be used in the identification of metaplastic breast carcinoma, prognostication of breast carcinoma, and classification of uterine mesenchymal neoplasms (identification of stromal sarcoma).

APPLICATION

To ensure optimal assay performance, AREX recommends conducting reagent titration tailored to each testing system for optimal detection results.

IHC	1:100 - 1:200
-----	---------------

*Results are sample-specific. Please refer to your local assay conditions and test parameters for reference.

PRODUCT OVERVIEW

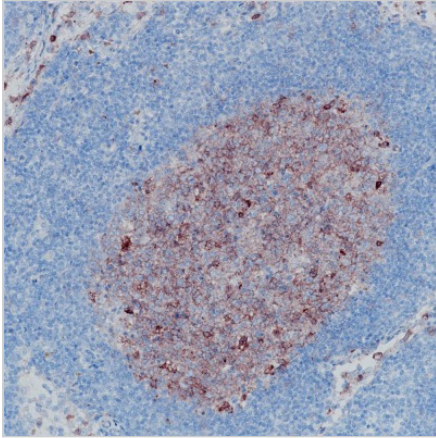
Predicted Molecular Wt	86 kDa
Purity	ProA affinity purified IgG
Subcellular location	Membrane
Swissprot ID	P08473
Immunogen	Recombinant protein corresponding to CD10 residues within aa1-500
Storage Buffer	PBS 59%, Sodium azide 0.01%, Glycerol 40%, BSA 0.05%
Recommended method	Heat induced epitope retrieval with Tris-EDTA buffer (pH 9.0), primary antibody incubate at RT (18° C-25° C) for 30 minutes.

*AREX continuously optimizes our products. Webpage content may not reflect the latest updates. For inquiries, please contact info@arexbio.com or your local distributor.

*Clone Number, Reactivity, Source/Host and Clonality can be found in the product name and Key Features section above.

DATASHEET**CD10 Rabbit Monoclonal Antibody(ARB836)**

CAT. NO. ARB6626

DATA

Immunohistochemical staining of human tonsillar tissue sections was performed using CD10 Rabbit Monoclonal Antibody (ARB836).

STORAGE

Store at 4°C short term. For long term storage, store at -20°C, avoiding freeze/thaw cycles.

NOTE

For Research Use Only. Not for diagnostic, therapeutics, prophylactic or in vivo use.

More information: www.arexbio.com