

DATASHEET

SYP Rabbit Monoclonal Antibody(ARB835)

CAT. NO. ARB6625

KEY FEATURES

Target	SYP	Clonality	Monoclonal
Clone ID	ARB835	Applications	IHC
Source / Host	Rabbit	Dilution	1:100-1:200
Reactivity	Human	Storage	at-20°C

BACKGROUND

Nuclear protein in testis (NUT1 or NUTM1) is a nuclear protein encoded by the NUTM1 gene on chromosome 15 and normally expressed in testicular tissues. NUT1 is an unstructured protein with few orthologs, and shuttles between the nucleus and cytoplasm. NUT cancer (formerly NUT Midline Carcinoma) occurs after a gene fusion event between NUTM1 and often a bromodomain (BRD) family gene in about 75% of cases. NUTM1 less commonly fuses with NSD3, MXD4, MGA, ZNF532, CIC, and other rare variants, which are all considered to be NUT cancers.

APPLICATION

To ensure optimal assay performance, AREX recommends conducting reagent titration tailored to each testing system for optimal detection results.

IHC	1:100 - 1:200
-----	---------------

*Results are sample-specific. Please refer to your local assay conditions and test parameters for reference.

PRODUCT OVERVIEW

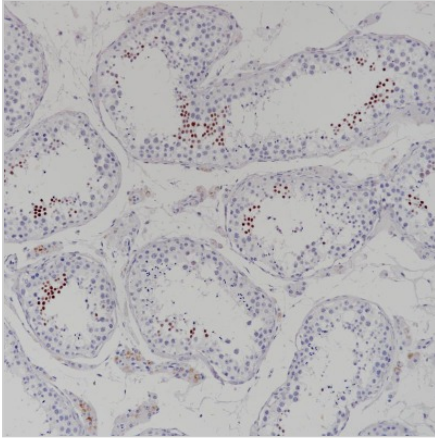
Predicted Molecular Wt	34 kDa
Purity	ProA affinity purified IgG
Subcellular location	Cytoplasm
Swissprot ID	P08247
Immunogen	Synthetic peptide corresponding to synaptophysin residues within aa213-313
Storage Buffer	PBS 59%, Sodium azide 0.01%, Glycerol 40%, BSA 0.05%
Recommended method	Heat induced epitope retrieval with Tris-EDTA buffer (pH 9.0), primary antibody incubate at RT (18° C-25° C) for 30 minutes.

*AREX continuously optimizes our products. Webpage content may not reflect the latest updates. For inquiries, please contact info@arexbio.com or your local distributor.

*Clone Number, Reactivity, Source/Host and Clonality can be found in the product name and Key Features section above.

DATASHEET**SYP Rabbit Monoclonal Antibody(ARB835)**

CAT. NO. ARB6625

DATA

Immunohistochemical staining of human testicular tissue sections was performed using SYP Rabbit Monoclonal Antibody (ARB835).

STORAGE

Store at 4°C short term. For long term storage, store at -20°C, avoiding freeze/thaw cycles.

NOTE

For Research Use Only. Not for diagnostic, therapeutics, prophylactic or in vivo use.

More information: www.arexbio.com