

DATASHEET

CD3 Rabbit Monoclonal Antibody(ARB832)

CAT. NO. ARB6622

KEY FEATURES

Target	CD3	Clonality	Monoclonal
Clone ID	ARB832	Applications	IHC
Source / Host	Rabbit	Dilution	1:100-1:200
Reactivity	Human	Storage	at-20°C

BACKGROUND

Cluster of differentiation 3 (CD3) is a multimeric protein complex, known historically as the T3 complex, and is composed of four distinct polypeptide chains; epsilon (ϵ), gamma (γ), delta (δ) and zeta (ζ), that assemble and function as three pairs of dimers ($\epsilon\gamma$, $\epsilon\delta$, $\zeta\zeta$). The CD3 complex serves as a T cell co-receptor that associates noncovalently with the T cell receptor (TCR). CD3 antigen appearance at all stages of T cell development, and makes it an ideal T cell marker for both the detection of normal T cells and T cell neoplasms (lymphomas and leukemias).

APPLICATION

To ensure optimal assay performance, AREX recommends conducting reagent titration tailored to each testing system for optimal detection results.

IHC	1:100 - 1:200
-----	---------------

*Results are sample-specific. Please refer to your local assay conditions and test parameters for reference.

PRODUCT OVERVIEW

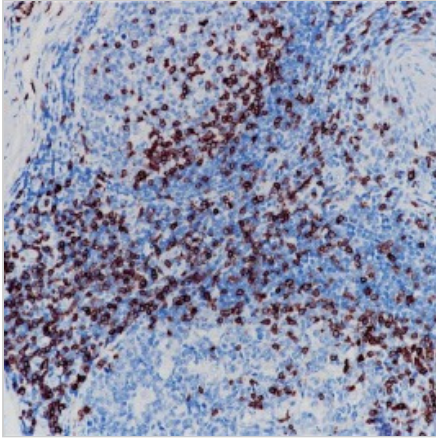
Predicted Molecular Wt	23 kDa
Purity	ProA affinity purified IgG
Subcellular location	Membrane
Swissprot ID	P07766
Immunogen	Synthetic peptide corresponding to CD3E residues within aa100-200 of CD3E
Storage Buffer	PBS 59%, Sodium azide 0.01%, Glycerol 40%, BSA 0.05%
Recommended method	Heat induced epitope retrieval with Tris-EDTA buffer (pH 9.0), primary antibody incubate at RT (18° C-25° C) for 30 minutes.

*AREX continuously optimizes our products. Webpage content may not reflect the latest updates. For inquiries, please contact info@arexbio.com or your local distributor.

*Clone Number, Reactivity, Source/Host and Clonality can be found in the product name and Key Features section above.

DATASHEET**CD3 Rabbit Monoclonal Antibody(ARB832)**

CAT. NO. ARB6622

DATA

Immunohistochemical staining of human tonsillar tissue sections was performed using CD3 Rabbit Monoclonal Antibody (ARB832). Immunohistochemical staining of human splenic tissue sections was performed using CD3 Rabbit Monoclonal Antibody (ARB832).

STORAGE

Store at 4°C short term. For long term storage, store at -20°C, avoiding freeze/thaw cycles.

NOTE

For Research Use Only. Not for diagnostic, therapeutics, prophylactic or in vivo use.

More information: www.arexbio.com