

DATASHEET

p63 Rabbit Monoclonal Antibody(ARB831)

CAT. NO. ARB6621

KEY FEATURES

Target	p63	Clonality	Monoclonal
Clone ID	ARB831	Applications	IHC
Source / Host	Rabbit	Dilution	1:100-1:200
Reactivity	Human	Storage	at-20°C

BACKGROUND

p63 is a transcription factor related to the tumor suppressor gene p53 and play a critical role in the development of stratified epithelia by maintaining basal cell regenerative capacity and perhaps by playing a role in mediating ectodermal-mesenchymal interactions. In normal tissues, p63 expression is presented in the basal cells of stratified epithelia such as skin, ectocervix, esophagus, urothelium, and bronchi. p63 is also found in basal cells of glandular tissue such as prostate and breast and in lymphoid tissue. In tumor tissues, the p63 gene is amplified and the protein is overexpressed in primary lung and head and neck squamous cell carcinomas. Squamous cell carcinomas of the larynx, esophagus, skin, and cervix also express p63. p63 expression has also been documented in basal cell carcinomas of skin. However, some studies also show that p63 expressed in a subset of adenocarcinomas and large cell carcinomas of lung. In diagnostic pathology practice, p63 has been studied as a marker of basal cells to help in the diagnosis of ductal carcinoma in situ of the breast versus invasive carcinoma in fine-needle aspirates. Similarly, p63 has been tested as a marker to identify basal cells in the diagnostic work-up for prostatic cancer. Recently, some studies have suggested that p63 in combination with other markers may be used to help in differentiating squamous cell carcinomas from other tumor types in cases difficult to diagnose histologically.

APPLICATION

To ensure optimal assay performance, AREX recommends conducting reagent titration tailored to each testing system for optimal detection results.

IHC	1:100 - 1:200
-----	---------------

*Results are sample-specific. Please refer to your local assay conditions and test parameters for reference.

PRODUCT OVERVIEW

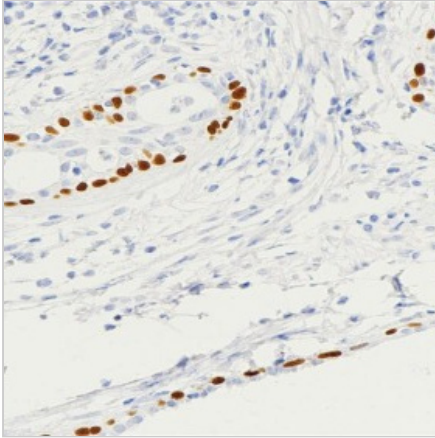
Predicted Molecular Wt	77 kDa
Purity	ProA affinity purified IgG
Subcellular location	Nucleus
Swissprot ID	Q9H3D4
Immunogen	Synthetic peptide corresponding to p63 residues within aa580-680 of p63
Storage Buffer	PBS 59%, Sodium azide 0.01%, Glycerol 40%, BSA 0.05%
Recommended method	Heat induced epitope retrieval with Tris-EDTA buffer (pH 9.0), primary antibody incubate at RT (18° C-25° C) for 30 minutes.

*AREX continuously optimizes our products. Webpage content may not reflect the latest updates. For inquiries, please contact info@arexbio.com or your local distributor.

*Clone Number, Reactivity, Source/Host and Clonality can be found in the product name and Key Features section above.

DATASHEET**p63 Rabbit Monoclonal Antibody(ARB831)**

CAT. NO. ARB6621

DATA

Immunohistochemical staining of human prostatic tissue sections was performed using p63 Rabbit Monoclonal Antibody (ARB831). Immunohistochemical staining of human esophageal tissue sections was performed using p63 Rabbit Monoclonal Antibody (ARB831).

STORAGE

Store at 4°C short term. For long term storage, store at -20°C, avoiding freeze/thaw cycles.

NOTE

For Research Use Only. Not for diagnostic, therapeutics, prophylactic or in vivo use.

More information: www.arexbio.com