

DATASHEET

p40 Rabbit Monoclonal Antibody(ARB829)

CAT. NO. ARB6619

KEY FEATURES

Target	p40	Clonality	Monoclonal
Clone ID	ARB829	Applications	IHC
Source / Host	Rabbit	Dilution	1:100-1:200
Reactivity	Human	Storage	at-20°C

BACKGROUND

p40 antibody (antibody recognizing ΔNp63 only) is an isoform of p63, is thought to function as a stem cell factor, responsible for maintaining cells in an uncommitted state with regenerative potential—a role that may be recapitulated in tumors derived from these cells. p40 is normally expressed in the basal or progenitor cell layer of stratified epithelia (eg. squamous, urothelial, bronchial), basal cells of some glandular epithelia (eg. prostate), as well as myoepithelial cells of breast and salivary glands, trophoblasts and thymic epithelial cells. In tumor tissues, p40 expression is specific for squamous cell carcinoma. p40 is equivalent to p63 in sensitivity for lung squamous cell carcinoma, but it is markedly superior to p63 in specificity, which eliminates a potential pitfall of misinterpreting a p63-positive adenocarcinoma or unsuspected lymphoma as squamous cell carcinoma. p40 appears to be a more reliable marker for squamous cell carcinoma.

APPLICATION

To ensure optimal assay performance, AREX recommends conducting reagent titration tailored to each testing system for optimal detection results.

IHC	1:100 - 1:200
-----	---------------

*Results are sample-specific. Please refer to your local assay conditions and test parameters for reference.

PRODUCT OVERVIEW

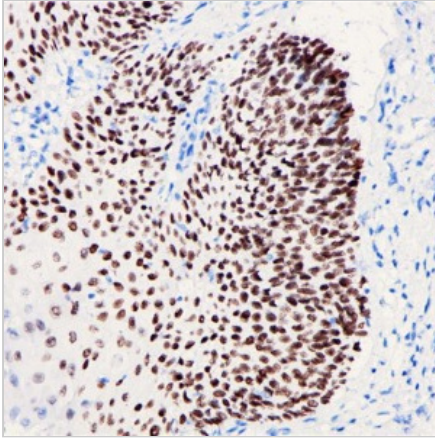
Predicted Molecular Wt	66 kDa
Purity	ProA affinity purified IgG
Subcellular location	Nucleus
Swissprot ID	Q9H3D4-2
Immunogen	Synthetic peptide corresponding to p40 residues within aa1-100 of p40
Storage Buffer	PBS 59%, Sodium azide 0.01%, Glycerol 40%, BSA 0.05%
Recommended method	Heat induced epitope retrieval with Tris-EDTA buffer (pH 9.0), primary antibody incubate at RT (18° C-25° C) for 30 minutes.

*AREX continuously optimizes our products. Webpage content may not reflect the latest updates. For inquiries, please contact info@arexbio.com or your local distributor.

*Clone Number, Reactivity, Source/Host and Clonality can be found in the product name and Key Features section above.

DATASHEET**p40 Rabbit Monoclonal Antibody(ARB829)**

CAT. NO. ARB6619

DATA

Immunohistochemical staining of human esophageal tissue sections was performed using p40 Rabbit Monoclonal Antibody (ARB829). Immunohistochemical staining of human prostatic tissue sections was performed using p40 Rabbit Monoclonal Antibody (ARB829).

STORAGE

Store at 4°C short term. For long term storage, store at -20°C, avoiding freeze/thaw cycles.

NOTE

For Research Use Only. Not for diagnostic, therapeutics, prophylactic or in vivo use.

More information: www.arexbio.com