

## DATASHEET

# SOX10 Rabbit Monoclonal Antibody(ARB827)

CAT. NO. ARB6617

### KEY FEATURES

Target	SOX10	Clonality	Monoclonal
Clone ID	ARB827	Applications	IHC
Source / Host	Rabbit	Dilution	1:100-1:200
Reactivity	Human	Storage	at-20°C

### BACKGROUND

SOX10 is a member of the SRY-related HMG-box (SOX) family of transcription factors involved in the regulation of embryonic development and in the determination of cell fate. During development, SOX10 first appears in the forming neural crest and continues to be expressed in Schwann cells. It is important for differentiation, maturation and maintenance of Schwann cells and melanocytes.

### APPLICATION

To ensure optimal assay performance, AREX recommends conducting reagent titration tailored to each testing system for optimal detection results.

IHC	1:100 - 1:200
-----	---------------

\*Results are sample-specific. Please refer to your local assay conditions and test parameters for reference.

### PRODUCT OVERVIEW

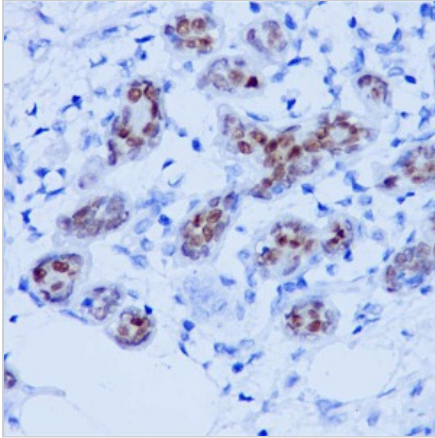
Predicted Molecular Wt	50 kDa
Purity	ProA affinity purified IgG
Subcellular location	Nucleus
Swissprot ID	P56693
Immunogen	Synthetic peptide corresponding to SOX10 residues within aa366-466
Storage Buffer	PBS 59%, Sodium azide 0.01%, Glycerol 40%, BSA 0.05%
Recommended method	Heat induced epitope retrieval with Tris-EDTA buffer (pH 9.0), primary antibody incubate at RT (18° C-25° C) for 30 minutes.

\*AREX continuously optimizes our products. Webpage content may not reflect the latest updates. For inquiries, please contact [info@arexbio.com](mailto:info@arexbio.com) or your local distributor.

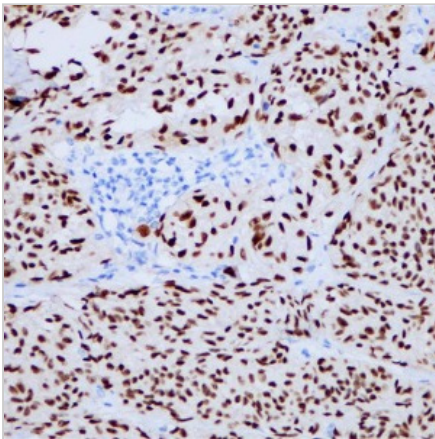
\*Clone Number, Reactivity, Source/Host and Clonality can be found in the product name and Key Features section above.

**DATASHEET****SOX10 Rabbit Monoclonal Antibody(ARB827)**

CAT. NO. ARB6617

**DATA**

Immunohistochemical staining of human mammary carcinoma tissue sections was performed using SOX10 Rabbit Monoclonal Antibody (ARB827). Immunohistochemical staining of human melanoma tissue sections was performed using SOX10 Rabbit Monoclonal Antibody (ARB827).



Immunohistochemical staining of human melanoma tissue sections was performed using SOX10 Rabbit Monoclonal Antibody (ARB827)

**STORAGE**

Store at 4°C short term. For long term storage, store at -20°C, avoiding freeze/thaw cycles.

**NOTE**

For Research Use Only. Not for diagnostic, therapeutics, prophylactic or in vivo use.

More information: [www.arexbio.com](http://www.arexbio.com)