

DATASHEET

CDX2 Rabbit Monoclonal Antibody(ARB826)

CAT. NO. ARB6616

KEY FEATURES

Target	CDX2	Clonality	Monoclonal
Clone ID	ARB826	Applications	IHC
Source / Host	Rabbit	Dilution	1:100-1:200
Reactivity	Human	Storage	at-20°C

BACKGROUND

CDX2 is a homeobox gene encoding nuclear homeodomain transcriptional factor essential to intestinal organogenesis. CDX2 is crucial for differentiation of epithelium in the intestine, pancreas and biliary tract. CDX2 interacts with the tumour suppressor genes APC and E-cadherin, as well as bcl-2. In the intestine (from duodenum to rectum) CDX2 nuclear protein is demonstrated strongly and uniformly in all types of epithelial cells. In pancreas and biliary tract CDX2 protein is demonstrated in scattered ductal cells. In tumor tissues, CDX2 is positive in the large majority cases of colorectal and appendiceal adenocarcinomas. CDX2 is a relatively sensitive and specific marker for "intestinal" adenocarcinomas. In the classification of (adeno-)carcinomas of the unknown primary, CDX2 is an important marker but should always be included in a panel. Also in order to identify the origin of neuroendocrine tumors, CDX2 is useful in a panel.

APPLICATION

To ensure optimal assay performance, AREX recommends conducting reagent titration tailored to each testing system for optimal detection results.

IHC	1:100 - 1:200
-----	---------------

*Results are sample-specific. Please refer to your local assay conditions and test parameters for reference.

PRODUCT OVERVIEW

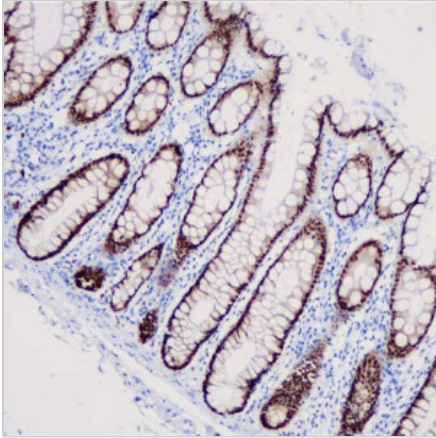
Predicted Molecular Wt	34 kDa
Purity	ProA affinity purified IgG
Subcellular location	Nucleus
Swissprot ID	Q99626
Immunogen	Synthetic peptide corresponding to CDX2 residues within aa1-100 of CDX2
Storage Buffer	PBS 59%, Sodium azide 0.01%, Glycerol 40%, BSA 0.05%
Recommended method	Heat induced epitope retrieval with Tris-EDTA buffer (pH 9.0), primary antibody incubate at RT (18° C-25° C) for 30 minutes.

*AREX continuously optimizes our products. Webpage content may not reflect the latest updates. For inquiries, please contact info@arexbio.com or your local distributor.

*Clone Number, Reactivity, Source/Host and Clonality can be found in the product name and Key Features section above.

DATASHEET**CDX2 Rabbit Monoclonal Antibody(ARB826)**

CAT. NO. ARB6616

DATA

Immunohistochemical staining of human colonic tissue sections was performed using CDX2 Rabbit Monoclonal Antibody (ARB826). Immunohistochemical staining of human colorectal carcinoma tissue sections was performed using CDX2 Rabbit Monoclonal Antibody (ARB826).

STORAGE

Store at 4°C short term. For long term storage, store at -20°C, avoiding freeze/thaw cycles.

NOTE

For Research Use Only. Not for diagnostic, therapeutics, prophylactic or in vivo use.

More information: www.arexbio.com