

DATASHEET

MSH6 Rabbit Monoclonal Antibody(ARB825)

CAT. NO. ARB6615

KEY FEATURES

Target	MSH6	Clonality	Monoclonal
Clone ID	ARB825	Applications	IHC
Source / Host	Rabbit	Dilution	1:100-1:200
Reactivity	Human	Storage	at-20°C

BACKGROUND

MSH6 is a mismatch repair protein which is deficient in a high proportion of patients with microsatellite instability (MSI-H). It has been suggested that the deficiencies in DNA mismatch repair protein(s) can be seen in some malignancies such as hereditary nonpolyposis colorectal cancer (HNPCC) and endometrial cancer. MSH6 expressed in all proliferating cells participate in repair of base-base mismatch, that occur during DNA replication. Loss of MSH6 expression leads to an accumulation of DNA replication errors in the proliferating cells, particularly in areas of the genome with short repetitive nucleotide sequences, a phenomenon known as microsatellite instability (MSI). MSH6 always used as panel with MLH1, MSH2, PMS2, and may be useful to aid in identifying the most probable gene responsible for the MSI.

APPLICATION

To ensure optimal assay performance, AREX recommends conducting reagent titration tailored to each testing system for optimal detection results.

IHC	1:100 - 1:200
-----	---------------

*Results are sample-specific. Please refer to your local assay conditions and test parameters for reference.

PRODUCT OVERVIEW

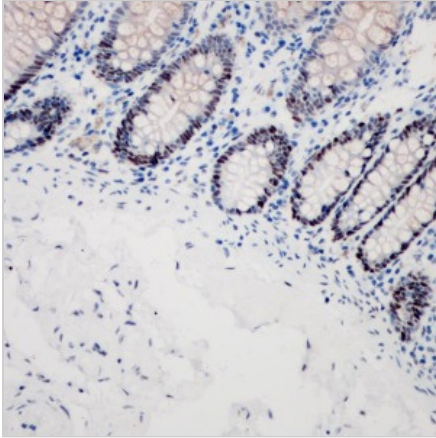
Predicted Molecular Wt	153 kDa
Purity	ProA affinity purified IgG
Subcellular location	Nucleus
Swissprot ID	P52701
Immunogen	Synthetic peptide corresponding to MSH6 residues within aa1-100 of MSH6
Storage Buffer	PBS 59%, Sodium azide 0.01%, Glycerol 40%, BSA 0.05%
Recommended method	Heat induced epitope retrieval with Tris-EDTA buffer (pH 9.0), primary antibody incubate at RT (18° C-25° C) for 30 minutes.

*AREX continuously optimizes our products. Webpage content may not reflect the latest updates. For inquiries, please contact info@arexbio.com or your local distributor.

*Clone Number, Reactivity, Source/Host and Clonality can be found in the product name and Key Features section above.

DATASHEET**MSH6 Rabbit Monoclonal Antibody(ARB825)**

CAT. NO. ARB6615

DATA

Immunohistochemical staining of human colorectal carcinoma tissue sections was performed using MSH6 Rabbit Monoclonal Antibody (ARB825).

STORAGE

Store at 4°C short term. For long term storage, store at -20°C, avoiding freeze/thaw cycles.

NOTE

For Research Use Only. Not for diagnostic, therapeutics, prophylactic or in vivo use.

More information: www.arexbio.com