

DATASHEET

PR Rabbit Monoclonal Antibody(ARB821)

CAT. NO. ARB6611

KEY FEATURES

Target	PR	Clonality	Monoclonal
Clone ID	ARB821	Applications	IHC
Source / Host	Rabbit	Dilution	1:100-1:200
Reactivity	Human	Storage	at-20°C

BACKGROUND

Progesterone is one of the central regulators of female reproduction. In breast development, progesterone is involved in the formation of lobular-alveolar structures and also affects differentiation in the breast by modulation of milk protein synthesis. The cellular effects of progesterone are mediated through progesterone receptors (PR). PR, a protein with 946 amino acids, is a ligand-activated transcription factor member of the steroid receptor super family of nuclear receptors. PR is predominantly expressed in female sex steroid responsive tissues such as the mammary gland, uterus and ovary but is also found in other tissues such as endocrine cells of the Langerhans' islets. The estrogen receptor (ER) and PR status has been used for over 20 years as a predictor of breast carcinoma responsiveness to endocrine therapy and as a prognostic indicator for early recurrence.

APPLICATION

To ensure optimal assay performance, AREX recommends conducting reagent titration tailored to each testing system for optimal detection results.

IHC	1:100 - 1:200
-----	---------------

*Results are sample-specific. Please refer to your local assay conditions and test parameters for reference.

PRODUCT OVERVIEW

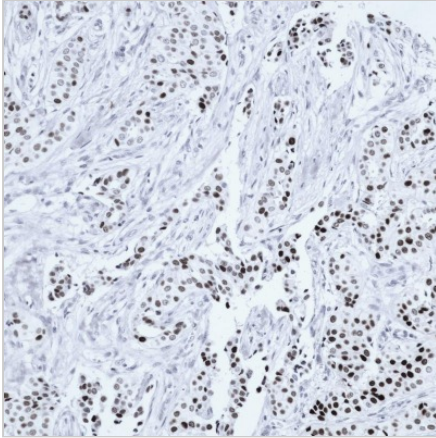
Predicted Molecular Wt	153kDa
Purity	ProA affinity purified IgG
Subcellular location	Nucleus
Swissprot ID	P52701
Immunogen	Synthetic peptide corresponding to MSH6 residues with aa1-100 of MSH6 was used as an immunogen
Storage Buffer	PBS 59%, Sodium azide 0.01%, Glycerol 40%, BSA 0.05%
Recommended method	Heat induced epitope retrieval with Tris-EDTA buffer (pH 9.0), primary antibody incubate at RT (18° C-25° C) for 30 minutes.

*AREX continuously optimizes our products. Webpage content may not reflect the latest updates. For inquiries, please contact info@arexbio.com or your local distributor.

*Clone Number, Reactivity, Source/Host and Clonality can be found in the product name and Key Features section above.

DATASHEET**PR Rabbit Monoclonal Antibody(ARB821)**

CAT. NO. ARB6611

DATA

Immunohistochemical staining of human mammary carcinoma tissue sections was performed using PR Rabbit Monoclonal Antibody (ARB821).

STORAGE

Store at 4°C short term. For long term storage, store at -20°C, avoiding freeze/thaw cycles.

NOTE

For Research Use Only. Not for diagnostic, therapeutics, prophylactic or in vivo use.

More information: www.arexbio.com