

## DATASHEET

# HER2 Rabbit Monoclonal Antibody(ARB820)

CAT. NO. ARB6610

### KEY FEATURES

Target	HER2	Clonality	Monoclonal
Clone ID	ARB820	Applications	IHC
Source / Host	Rabbit	Dilution	1:100-1:200
Reactivity	Human	Storage	at-20°C

### BACKGROUND

HER - 2 (also called HER - 2/neu, c - erbB2, ERBB2 or neu) is a transmembrane receptor tyrosine kinase, which is a proto - oncogene, i.e. its activation causes malignant transformation and increases the malignant potential (cell proliferation, invasiveness etc.) of the cells. In human cancers HER - 2 is activated via gene amplification, which is a genomic mutation where a small fragment at chromosome band 17q12 - q21 is multiplied in a cell up to 50 - 100 folds. HER - 2 is over - expressed in 15 - 25% of primary breast cancers, can also be found in intestinal type gastric and gastroesophageal carcinomas, ovarian carcinomas, high grade endometrial carcinomas and some salivary duct tumors. Low - level copy number increases have been found also in rare cases of lung tumors. Studies have shown that c - erbB - 2 positive breast cancer usually correlates with negative staining for estrogen and progesterone receptors; thus a poorer predictive outcome is correlated with positive c - erbB - 2 staining.

### APPLICATION

To ensure optimal assay performance, AREX recommends conducting reagent titration tailored to each testing system for optimal detection results.

IHC	1:100 - 1:200
-----	---------------

\*Results are sample-specific. Please refer to your local assay conditions and test parameters for reference.

### PRODUCT OVERVIEW

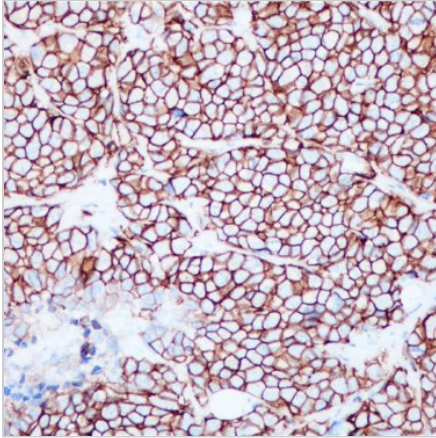
Predicted Molecular Wt	138 kDa
Purity	ProA affinity purified IgG
Subcellular location	Membrane
Swissprot ID	P04626
Immunogen	Synthetic peptide corresponding to aa1155-1255 of HER-2
Storage Buffer	PBS 59%, Sodium azide 0.01%, Glycerol 40%, BSA 0.05%
Recommended method	Heat induced epitope retrieval with Tris-EDTA buffer (pH 9.0), primary antibody incubate at RT (18° C- 25° C) for 30 minutes.

\*AREX continuously optimizes our products. Webpage content may not reflect the latest updates. For inquiries, please contact [info@arexbio.com](mailto:info@arexbio.com) or your local distributor.

\*Clone Number, Reactivity, Source/Host and Clonality can be found in the product name and Key Features section above.

**DATASHEET****HER2 Rabbit Monoclonal Antibody(ARB820)**

CAT. NO. ARB6610

**DATA**

Immunohistochemical staining of human breast carcinoma tissue sections using HER2 Rabbit Monoclonal Antibody (ARB820). Immunohistochemical staining of human breast carcinoma (-) tissue sections using HER2 Rabbit Monoclonal Antibody (ARB820).

**STORAGE**

Store at 4°C short term. For long term storage, store at -20°C, avoiding freeze/thaw cycles.

**NOTE**

For Research Use Only. Not for diagnostic, therapeutics, prophylactic or in vivo use.

More information: [www.arexbio.com](http://www.arexbio.com)